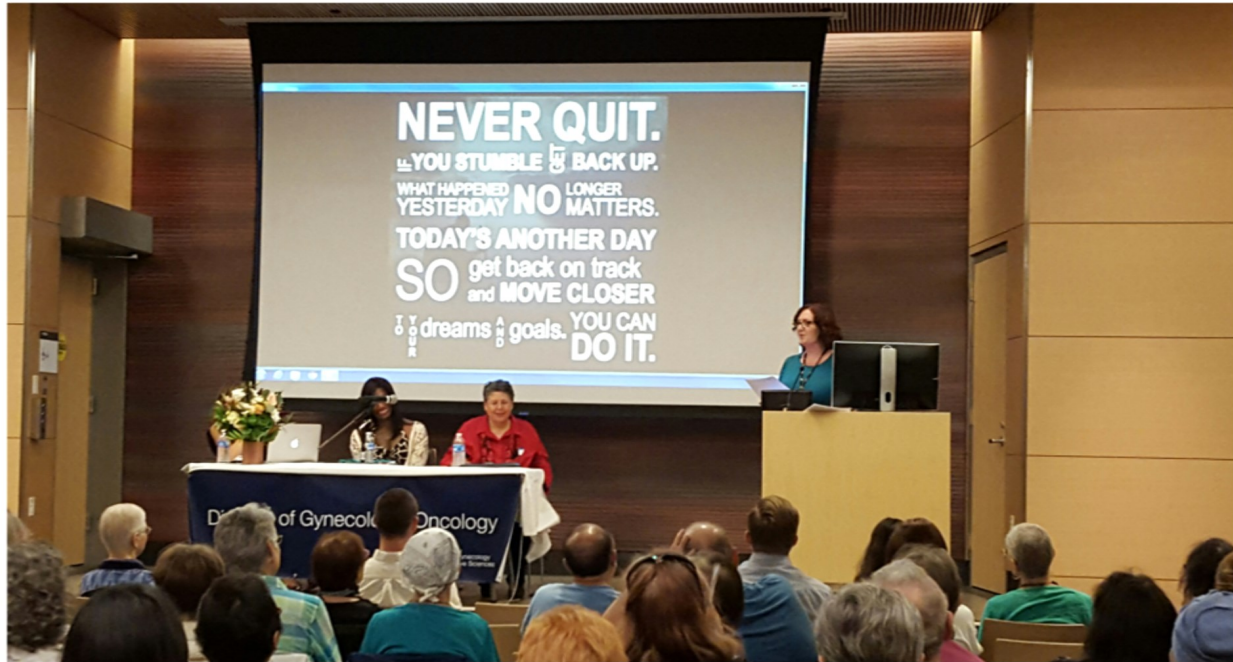


# THE 5th ANNUAL GYNECOLOGIC CANCER SYMPOSIUM COME OUT & SUPPORT OUR WOMEN!



**Saturday**

**September 16, 2017  
8:30am to 4:00pm**

8:00am Optional Gentle Yoga  
at Mariposa Park in front of Mission Bay Hospital

**Register now at:** [www.eventbrite.com](http://www.eventbrite.com)  
**key word:** UCSF Gynecologic Cancer Symposium

**More information visit:** [obgyn.ucsf.edu/gynecologic-oncology](http://obgyn.ucsf.edu/gynecologic-oncology)  
link: Division Projects

**UCSF Oberndorf Auditorium  
1855 4th Street  
San Francisco, CA 94158**

**UCSF** Division of  
Gynecologic Oncology

“A wonderful opportunity to get the latest updates on gynecologic cancer care & connect with other women.”

“Every women could benefit from attending this symposium.”

“Seeing the presentations gave me more information on research trends than reading online.”

Quotes from last years Attendees



## Featured Speakers



### **Moderator**

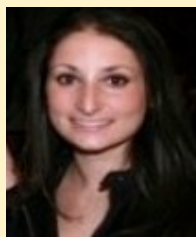
Lee-may Chen, MD, FACS, FACOG

Dr. Lee-may Chen is the Division Director in Gynecologic Oncology and director of the UCSF Gynecologic Cancer Risk Program. She is internationally recognized as an expert in the management of patients with gynecologic malignancies and has a particular interest in surgical and medical management of ovarian cancer. Her research focuses on hereditary gynecologic cancer, early detection in women who are at a high risk, symptom management and quality cancer care.



### **Edwin Alvarez, MD**

Dr. Edwin Alexander Alvarez is a board certified gynecologic oncologist. His primary focus is the surgical and medical treatment of ovarian cancer, cervical cancer, endometrial cancer and other malignancies of the female reproductive system. Dr. Alvarez performs both open and minimally invasive gynecologic oncology and complicated gynecologic surgery. Dr. Alvarez has a strong commitment to teaching of medical students, residents and fellows. He is fluent in Spanish. Aside from his clinical trial interests, Dr. Alvarez's is currently working on a study of young Latina women in California and on a study of the care disparities for women with ovarian cancer in Northern California



### **Jamie Cohen, PsyD**

Dr. Cohen is a clinical psychologist at UCSF. Her clinical interests include motivational processes involved in adaptive health behavior change, facilitating integrative and interdisciplinary approaches to comprehensive healthcare, as well as assisting patients and their families cope with the challenges associated with cancer diagnosis, care, and survivorship. As a member of the psycho-oncology team, some of the services she is honored to assist patients with include goal-setting and problem navigation in the context of cancer treatment, as well cognitive, behavioral, and mindfulness-based interventions for managing pain, insomnia, fatigue, stress, and more.



### **Pamela Munster, MD**

Dr. Munster is a Professor in Residence and Director of Early Phase Clinical Trials Program at the Helen Diller Family Comprehensive Cancer Center. Her research involves studies on epigenetic modification of DNA repair and therapy resistance. Dr. Munster's laboratory is involved in several projects testing HDAC inhibitors, reverse hormone therapy resistance in breast cancer, and re-engaging immune defense. clinical research interests are in the area of early anti-tumor drug development with focus on drugs that target the mTOR, P13k pathways and the epigenetic regulation of immune response to therapy. Dr. Munster also has a special interest in germline cancer mutations.



### **Greta Macaire, RD**

Greta Macaire is an oncology dietitian with the UCSF Helen Diller Family Comprehensive Cancer Center. She helps patients with nutrition guidelines for specific cancers, supportive nutrition during treatment, and optimal healthy eating patterns to reduce the risk of cancer recurrence and maximize quality of life. Macaire is a Certified Specialist in Oncology Nutrition (CSO), the highest credential given to registered dietitians for expertise in oncology nutrition.



### **Stefanie Ueda, MD**

Dr. Stefanie Ueda specializes in gynecologic cancers, with a particular interest in ovarian cancer and robotic surgery. Her research has addressed conditions and treatments including low grade serous and clear cell ovarian cancer, uterine serous cancer, biologically targeted therapies and clinical treatment outcomes. Dr. Ueda has primarily been focusing on expanding the presence of UCSF's Division of Gynecologic Oncology in Global Health. She has been collaborating with Dr. Meg Autry and Dr. Felicia Lester to develop a clinical education and surgical training program at Mulago Hospital and Makerere University, the largest public hospital and medical school in Uganda.



### **Pauline Beggs, RN**

Pauline Beggs is a registered nurse in gynecologic oncology for over 30 years. She is the recipient of the prestigious 2011 Ernest H. Rosenbaum, MD Symptom Management Service Commitment to Patient Care Award for her passionate devotion to providing exceptionally high-quality patient care. Pauline is one of the honorees of the prestigious DAISY Award for Extraordinary Nurses in 2016.

## Program Agenda

<b>8:00am – 8:30am</b>	Gentle Standing Yoga & Meditative Breathing at Mariposa Park <b><i>(Optional)</i></b>
<b>8:30am – 9:00am</b>	Registration /Breakfast
<b>9:00am – 9:05am</b>	Introductions - Pauline Beggs, RN
<b>9:05am – 9:15am</b>	Welcoming Remarks - Lee-may Chen, MD
<b>9:15am – 9:40am</b>	Gynecologic Oncology Clinical Trial Updates - Edwin Alvarez, MD
<b>9:40am – 9:55am</b>	Q&A
<b>9:55am – 10:10am</b>	Conversations Below the Belt with Dr. Chen & Nancy Livingston
<b>10:10am – 10:25am</b>	Q&A
<b>10:25am – 10:40am</b>	Break
<b>10:40am – 11:05am</b>	Novel Targets & Strategies in Gynecological Cancers Pamela Munster, MD
<b>11:05am – 11:20am</b>	Q&A
<b>11:20am – 11:45pm</b>	Evidenced Based Answers to Nutrition Questions Frequently asked by Women with Gynecological Cancers - Greta Macaire, RD
<b>11:45pm – 12:00pm</b>	Q&A
<b>12:00pm – 1:00pm</b>	Lunch
<b>1:00pm – 2:00pm</b>	Small Group Discussion, Breakout Session
<b>2:00pm – 2:25pm</b>	Coping with Gynecologic Cancer - Jamie Cohen, PsyD
<b>2:25pm - 2:40pm</b>	Q&A
<b>2:40pm – 2:55pm</b>	Break / Caregiver Support <i>Group</i> - Allison Zaitchik, MSW <b><i>(Optional, please sign up)</i></b>
<b>2:55pm – 3:10pm</b>	Inspiring Others - Carla Thomas
<b>3:10pm – 3:25pm</b>	Q&A
<b>3:25pm – 3:35pm</b>	Closing Remarks - Stefanie Ueda, MD Gyn Onc Friend's Circle
<b>3:25pm – 4:00pm</b>	Gyn Onc Friends Circle & Raffle / Gift Bags distribution <b><i>(Please submit Evaluation form to received gift bag.)</i></b>